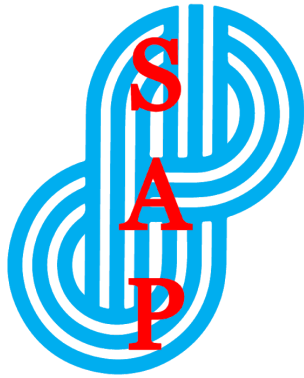


St Anne's Pantry 2020 Year REPORT TO STAKEHOLDERS



St Anne's Pantry

Promoting food security in
Porirua since 1984

Introduction

Tena koutou, tena koutou, tena koutou, katoa.

Thank you for partnering with St Anne's Pantry (SAP) during 2020.

Diane Stuart and Val Grace (and their husbands) indicated early in 2019 that they would complete their term as St Anne's Pantry Facilitators by year's end. An extensive review of the Pantry operation took place during 2019 with closure a very real possibility. As a result of the Review, Sofia Ali & Margaret Alve offered to jointly facilitate the Pantry operation in 2020.

First tasks were relocation of the Pantry to new premises, cleaning the previous location, and establishing contact with Kiwi Community Assistance, the major suppliers of groceries, and Citizens' Advice Bureau, Porirua, the main source of referrals for grocery parcels.

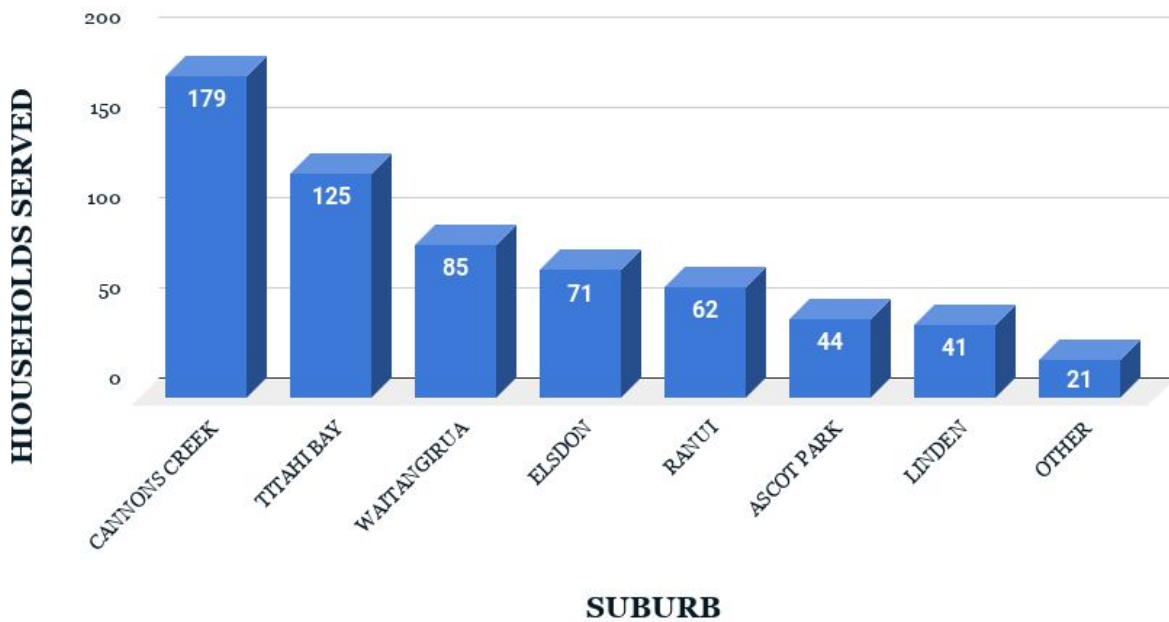
Emergency Grocery Parcel distribution January to mid-March tracked similarly to the comparable period in previous years. Then everything changed with the arrival of Covid-19 Level 3 & 4 lock downs. This report surveys what that meant for the Pantry.

Who We Serve

The Pantry's mission is to improve the food security of households in Porirua City and the Linden Suburb of Wellington City. Over the course of 2020 we delivered 1,097 emergency, grocery parcels to 628 households with an average size of 4.48 people. Based on these figures we delivered on average 1.75 parcels per household. We limit delivery to 3 parcels in any 4 month period. High users are limited to 9 parcels in a year.

Food parcel requests came via CAB Porirua, Te Whare Tiaki Wahine Refuge, St Anne's Pantry web form, phone, text or email, and for a period during level 3 & 4 lockdowns via the Porirua Emergency Operations Centre. Pantry volunteers delivered the food to households.

St Anne's Pantry Deliveries by Suburb 2020

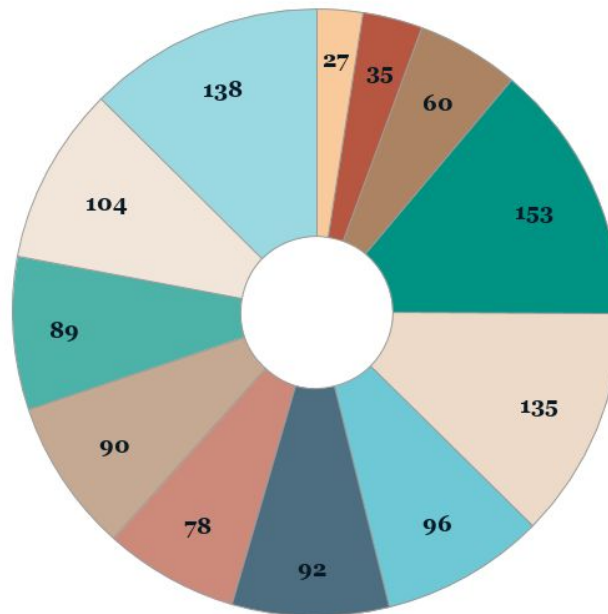


And the following graphic compares delivery activity month by month during 2020

ST ANNE'S PANTRY DELIVERIES BY MONTH 2020

TOTAL DELIVERIES - 1097

- JANUARY
- FEBRUARY
- MARCH
- APRIL
- MAY
- JUNE
- JULY
- AUGUST
- SEPTEMBER
- OCTOBER
- NOVEMBER
- DECEMBER



Volunteers

The involvement of volunteer shelvers, packers and drivers was recognised early as an important task, albeit L3 & L4 lock downs postponed most recruitment until June. At year's end we invited 20 volunteer helpers to our Volunteer Christmas event. Seven of these people have a St Anne's connection. Others have links with Tawa, Pauatahanui and Whitby parishes and others are not Church connected. As we plan for 2021, we recognise some gaps in the volunteer team and also the need to have backup people on call when regulars are unavailable. We estimate the Pantry volunteers donated around 45 hours per week on average, i.e. around 2350 volunteer hours have been donated during 2020.

Kiwi Community Assistance

KCA operates out of a large warehouse in Grenada North, a 4-5 minute drive from the Pantry location. Each week we made anything from 2-5 trips to the KCA warehouse to collect donated goods that have been rescued from various food suppliers or distributors. For example for several weeks at the end of 2020 we received 3+ boxes of apples weekly

from a Hawkes Bay orchard. By year's end 2020 we estimate that we had received from KCA grocery supplies worth in excess of \$110,000. All free of charge. Tracy and Michelle and their team of volunteers are a delight to do business with.

Other Grocery Donations

During 2020 we continued to receive grocery donations from Church, Business and Community donors. Regular church donors are: Mana, Titahi Bay & Khandallah Presbyterian Churches; Pauatahanui, Whitby, Porirua Anglican Churches. Community donors included the Porirua Rotary Club, Cardinal Creative, Summerset Aotea residents, Pauatahanui and St Teresa's, Karori Schools and several individual donors. Both the Porirua and Mana New World stores channelled donated groceries to St Anne's Pantry. New World Porirua made us recipients of over \$5,000 worth groceries that came via their June-July Family2Family Appeal. \$1,000 of this amount was a gift from Porirua Rotary. This Rotary Club also collected over \$1,000 worth of groceries from the Aotea Community at the end of November. An individual donor gave Christmas donations of around \$1,000 groceries.

Financial Donations

Detailed financial reporting is available separately - please ask if you have not been sent this. As the Pandemic lockdowns proceeded and foodbank requests increased two significant things happened financially:

1. People, largely from the northern suburbs of Porirua, generously gave in support of the Pantry \$2-3,000 monthly. In addition, the Nikau Foundation approached and gave us \$2,500.
2. Access to Government financial resources was given via: MSD, Porirua City Council and Wellington City Council in the light of the Pandemic.

By year's end 2020 total income amounted to nearly \$60,000 which enabled Pantry buyers to significantly supplement donated grocery supplies. Groceries have been purchased, after research looking for best deals, from Gilmours, PakNSave, Uncle Bills and The Warehouse with specials from other supermarkets as available.

True Costs to Run the Pantry in 2020

ITEM	RATE	TOTAL
Operating Costs	Net \$882 weekly	45,850
KCA rescued food donated (est.)	Net \$2,067 weekly	107,500
Other donated food & goods (est.)	Net \$587 weekly	30,500
Donated time (est.)	45hrs/wk @\$22.10 (living wage rate)	51,714
Donated kms.	100km/wk @ 50c	2,600
TOTAL	Net \$4580 weekly	\$238,164

The summary above makes an attempt to assess the true running costs of the St Anne's Pantry operation in equivalent financial terms. It seeks to make a realistic assessment of the dollar value of time, goods and good will donated in addition to actual expenses. As you see, if St Anne's Pantry was a commercial business, the bottom line would have operating costs around \$238,000+. In fact, less than \$46,000 (or 19% of this) was spent running the Pantry. Thank God for volunteers and generous people and organisations like you.

Feedback

Any assessment of the value of the Pantry has to account for what it means in the lives of families serviced. Here are two feedback reports - others are indicated [HERE](#):

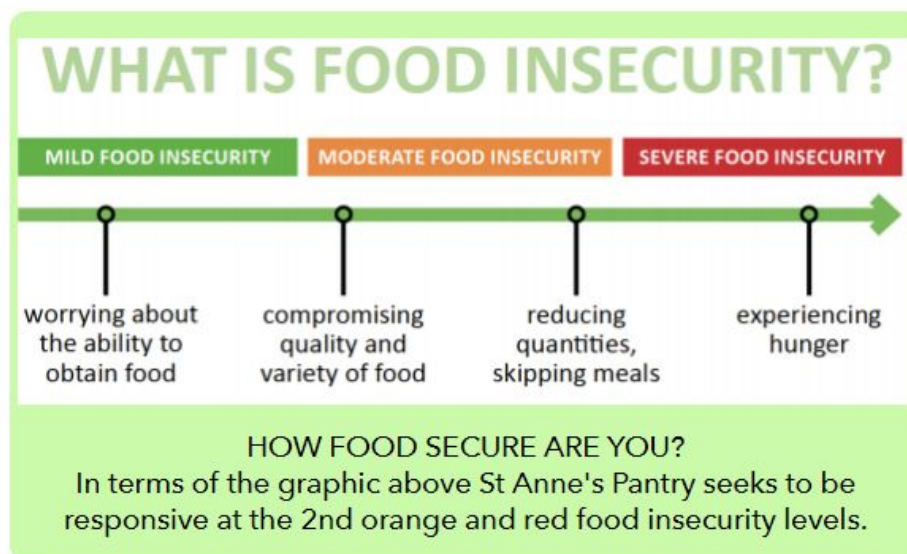
- I appreciate the food parcel so much. It helped me get back on track with keeping me and my son fed during the main part of the co-vid epidemic, I also really appreciated how you were so nice and discrete since I was ashamed to ask for help, thank you so much I'll never forget your help. *Richard*
- I truly do not know how to thank St Annes pantry and their suppliers/donors enough for the kindness and un-biased assistance they provide me and my family when we are in unforeseen circumstances where the parcel they deliver is very much appreciated. Thank you. God bless. *Chanttal*

Food Security and the Future

People around the country are variously doing things differently in the food resilience space. During 2020 we have attended three forums where those working in the food resilience/security field have gathered to discuss ways forward and to share what they do. The concept of the traditional Food Bank is seriously questioned by some because:

- Choice is not there
- Mana is not enhanced
- Decisions are made for others rather than with them
- Food can be wasted (not wanted)
- People are not being encouraged to be self-sufficient, etc.

There are various exciting initiatives being taken including some locally. Wesley Community Action and WELLfed offer cooking classes and WCA a community garden. Citizens Advice Bureau (via Agape) and Christians Against Poverty (via Freedom Church) offer local budgeting advice. Kore Hiakai: The Zero Hunger Collective is at the forefront of encouraging networking of people who work in this space. St Anne's Pantry leadership welcome the 'mahe' being done and we cooperate where possible. We look forward to a future where requests for emergency grocery parcels in Porirua and Linden decline, rather than rise because these efforts are making a difference.



Looking Forward to 2021

After a roller coaster year, the Pantry closed from 24th December until 11th January 2021.

Below you will find our draft budget for 2021. It envisages that Pantry requests will diminish over the year as things settle with the pandemic and as vaccines are administered. However the future will always present unpredictably. Who this time last year anticipated that 2020 would unfold as it has?

SUMMARY (NET) BUDGET 2021

Income		
Capital drawdown		9,500
Financial Donations		30,000
		\$39,500
Expenses		
Groceries		35,000
Vehicle Expenses		2,500
Misc.		2,000
		\$39,500
Surplus		-

At our planning meeting on 8 January 2021 we have charted a way forward which will have us pack and deliver 3 days a week. We have modified the grocery items we will deliver and have edited our website form making it more clear that we are an emergency food bank. We will continue working with KCA Warehouse and with CAB Porirua to achieve these ends. We anticipate that requests for groceries will be less during 2021 and that we will be more active in working with those who request groceries, especially by linking more households with budgeting services.

In Conclusion

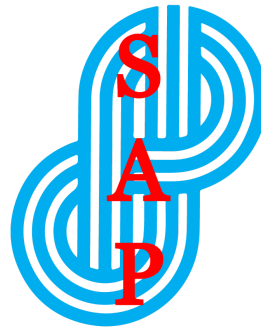
It has been a pleasure to be part of a team of stakeholders that is so committed to giving feet to our (Diocesan and Gospel) vision to serve the least, the last and the lost. We are constantly aware that government allocated resources do not meet the needs of many in our region. Many families go to bed at night hungry. The 628 families we served in 2020 with at least one grocery parcel delivery are constantly grateful that our combined effort has made a significant difference for them. They regularly tell us it has.

Many, many thanks for your ongoing support.

Nga mihi nui and may God bless you in 2021,

Terry Alve,
Priest in Charge of St Anne's
Porirua Anglican Parish¹

11th January 2021



MAJOR PARTNERS



¹ 027 944 4996 | stannespantry@gmail.com | <https://poriruaanglican.nz/sap>